



New Westlock Community

*"Designed for living, where neighbors
become friends and friends build communities"*

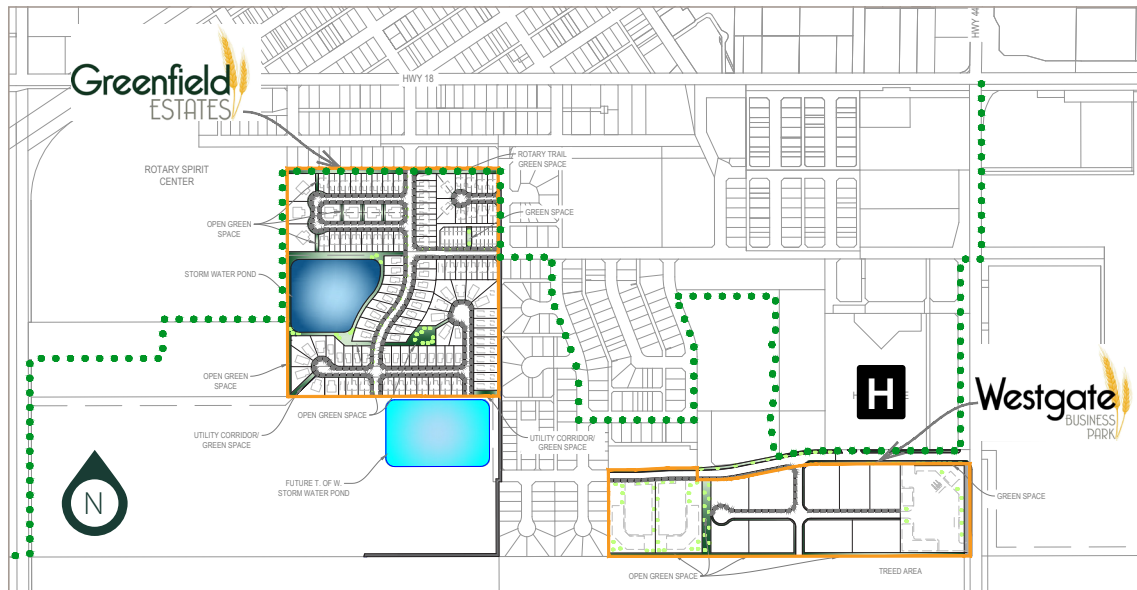


Welcome to Westgate's Newest Development...

WESTGATE BUSINESS PARK AND GREENFIELD ESTATES

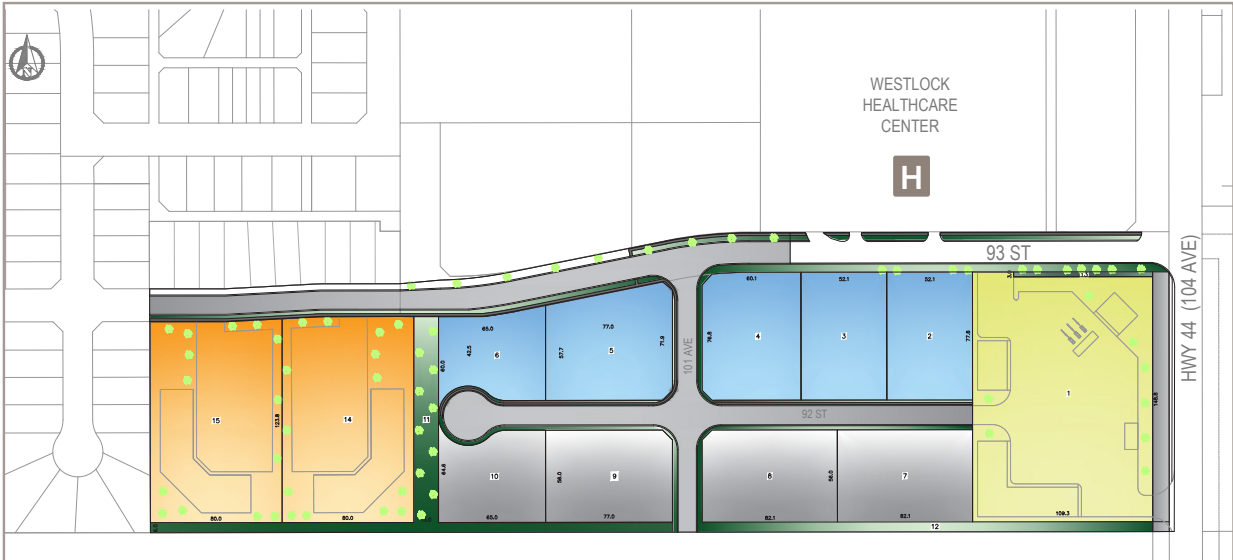
Our vision for Westlock Alberta is to create communities that stand the test of time, leaving a legacy for future generations to come. As developers, we have an opportunity to create sustainable and innovative communities by paying attention to the finer details of planning and design – while continually caring and thinking about individuals and keeping their lifestyles in mind.

Westgate Developments' mission and goal is to develop communities where we want to live, work, and call your community home.



Westgate

BUSINESS PARK

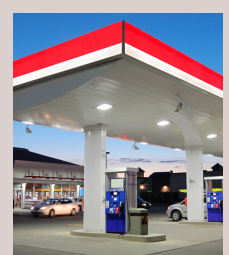
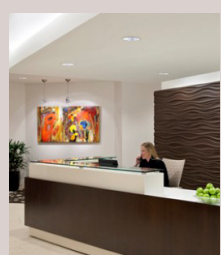
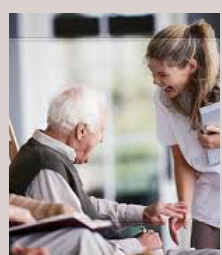
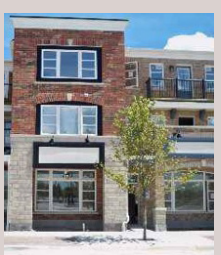


THIS DRAWING IS AN ARTISTS CONCEPTION
DEVELOPER HAS THE RIGHT TO MAKE MODIFICATIONS AND CHANGES

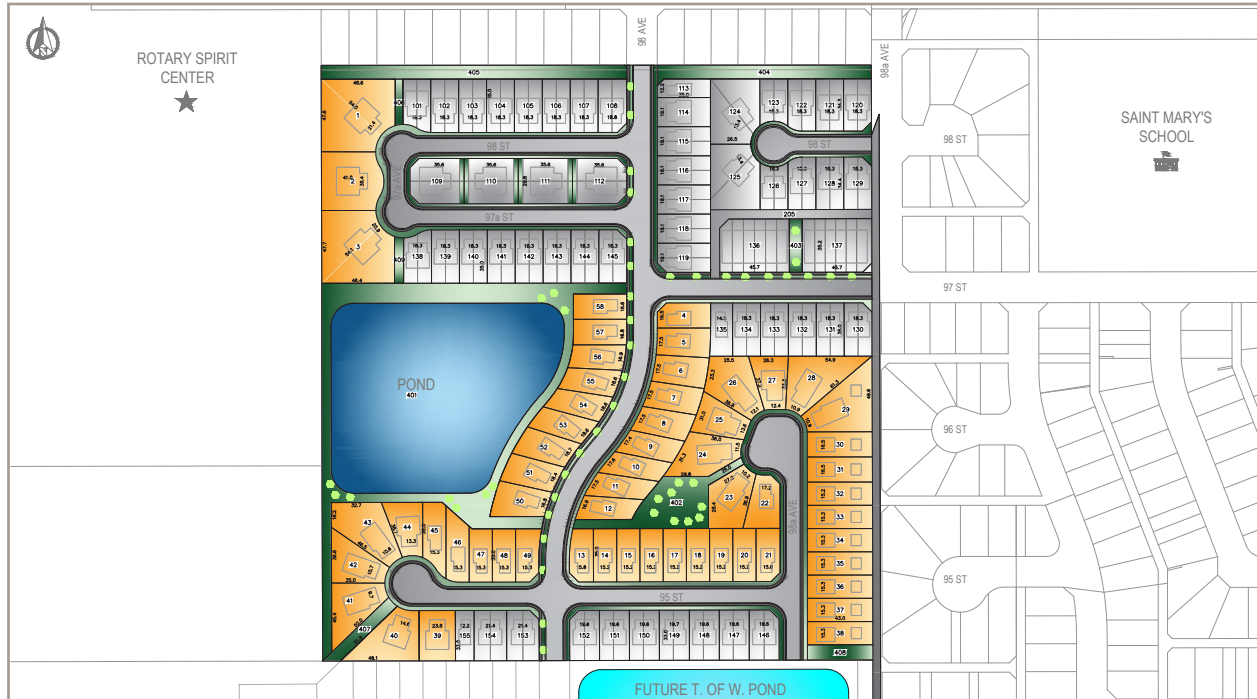
Westgate Business Parks' fully functioning community is located directly across from the Westlock Hospital and offers a unique blend of highway and mixed use professional, retail and light commercial lots. Westgate Business Park enables business owners, employers and workers the freedom to "Work - Live" in this well-designed community.

The possibilities are endless for great opportunities and interactions to arise. Where it is comfortable to say hi to a neighbor or move on to work.

- R-3** Proposed Land Use: High Density Residential
- IL** Proposed Land Use: Industrial Light
- CMP** Proposed Land Use: Commercial Multi-Purpose
- CH** Proposed Land Use: Highway Commercial



Greenfield ESTATES



THIS DRAWING IS AN ARTIST'S CONCEPTION
DEVELOPER HAS THE RIGHT TO MAKE MODIFICATIONS AND CHANGES



Greenfield Estates in Westlock, Alberta offers a new residential community to call home. A place one can enjoy the simple walking pleasures within Greenfield's natural environment or meander over to Westgate Business Park for a cup of coffee.

Where all walks of life can find the right lot to build that perfect home. Greenfield Estates offers a mix of single family homes, duplexes and town homes.

- R-1** Proposed Land Use: Low Residential 
- R-2** Proposed Land Use: Medium Residential 
- R-3** Proposed Land Use: High Density 

20%
GREEN SPACE

Total Outline Plan Area
Green Space:
2.80 ha (6.92 acres)

- MR** Proposed Land Use: Municipal Reserve • Ponds, Parks, Paths 
- PR** Proposed Land Use: Public Reserve • Roads, Sidewalks, Boulevards 



WG Westgate Developments Ltd.

RICHARD FAUCHER
C: 780.387.1101
richardfaucher@realtyexecutives.com

HERVE FAUCHER
C: 403.312.4672
hnfaucher@telus.net

TAMMY JOEL KEMNA
C: 403.554.9701
t.kemna@joelwest-67.com

JIM BIBLOW
C: 403.880.5444
jimiblow@telus.net

WESTGATEDEVELOPMENTS.COM